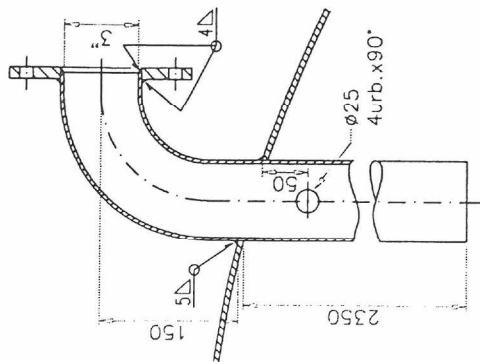
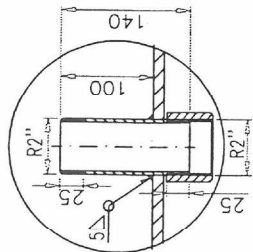


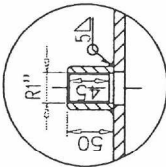
Poz. 3
M 1:4



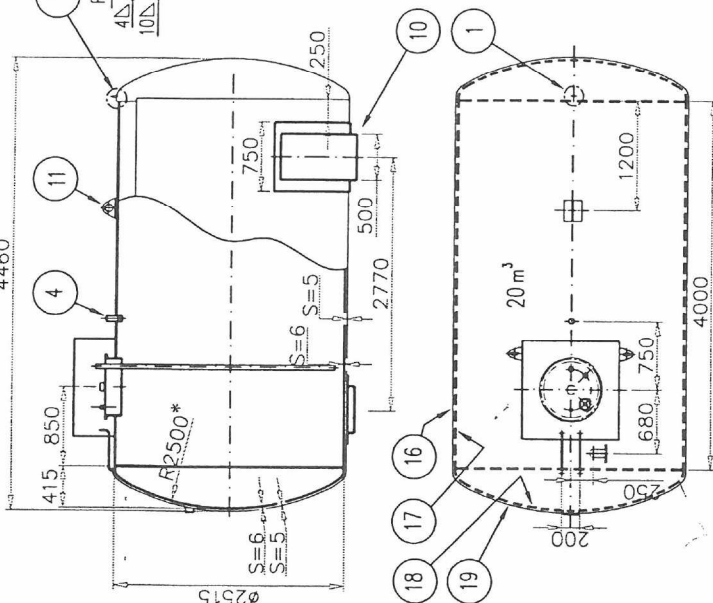
Poz. 4
M 1:4



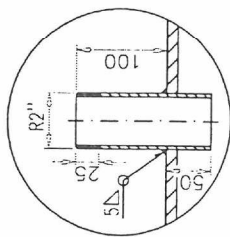
Poz. 8
M 1:4



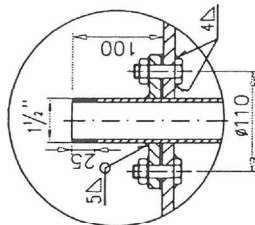
4460



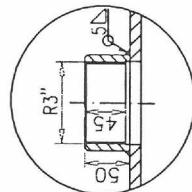
Poz. 7
M 1:4



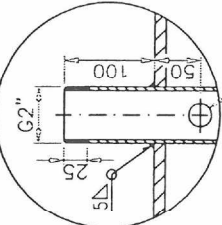
Poz. 6
M 1:4



Poz. 5
M 1:4



Poz. 9
M 1:4



Viso ārējā virsma tiek pārklāta ar 0,2 mm biezu degvielas izturīgu krāsu.
" * " - iekšējie izmēri.

Pos.	Q.	Specification	Material	Dimension	Notes
1	1	šalta ar vāku	S 235 JRG 2	1080x1060	
2	2	opšuvuma gals	S 235 JRG 2	2515x5	
3	3	galv. cilindra gals	S 235 JRG 2	2500x6	
4	4	opšuvums	S 235 JRG 2	2515x5	
5	5	galv. cilindr	S 235 JRG 2	2500x6	
6	6	lūkas vāks	S 235 JRG 2	4894	
7	7	blīve	EBL gumija	4894x5	
8	8	uzgrieznis	8.8 GOST 5916-81	M12	
9	9	skrūve	8.8 GOST 7798-81	M12x45	
10	10	balsts	S 235 JRG 2	2300x500x900	
11	11	mērstiena caurule 2"	GOST 3262-81	480x3,5 L=2615	
12	12	pārpl. pie uzpild. 1"	GOST 3262-81	Mulle L=50	
13	13	tvaiku atgrieš.caur. 2"	GOST 3262-81	480x3,5 L=150	
14	14	izdošanas caurule 1 1/2"	GOST 3262-81	480x3,5 L=2615	
15	15	autom. līm. mēr. 3"	GOST 3262-81	Mulle L=50	
16	16	vēdināt. caurule 2"	GOST 3262-81	480x3,5 L=150	
17	17	pieņemšanas caurule 3"	GOST 3262-81	480x3,5 L=2600	
18	18	lūka	S 235 JRG 2	DN600	
19	19	droš.sist.izvads 1/2"	GOST 3262-81	480x3,5 L=2600	
20	20	2urb. 20			

SIA "VALTANKS"

V=20 m³

" Balt Control "

Formāt A2

Scale 1:40

Material

Dimension

Notes

Date 17.08.2004.

Draw. No

rev.

VI.160.00

B